



# T100

3D Laser Scanning Mobile  
Measurement Systems



# New Style Mobile Measurement

The GoSLAM mobile measurement system uses SLAM technology (simultaneous localization and mapping) which is real time positioning and mapping technology. It does not rely on GNSS positioning such as GPS, and can perform self positioning, incremental 3D mapping in unknown environments such as indoor and outdoor space.

GoSLAM is committed to providing user centered 3D laser mobile scanning measurement system product solutions, bringing users a better work experience.



**Real time**

**Accuracy**

**Efficiency**

**Simplicity**

# Product Introduction



Scanning  
Range

**120m**

Point  
Accuracy

**1cm (Highest)**

Accurate & Reliable

Scanning  
Speed

**320,000  
points/second**

Efficient Scanning

FOV

**360°×285°**

Super Large Field Of View



# Product Features

## Rotating Laser Sensor



## App real-time preview



## Strong Weather Resistance

T100 has ultra strong weather resistance and can operate in an environment of -35-60 °C.



## High Level Of Protection

T100 has a high level of protection against dust and water, suitable for various environments.



## Support Multi-platforms

Inheriting excellent platform compatibility, it supports multiple platforms and scanning modes such as backpack, drone, vehicle, USV and robotic dog, meeting your full imagination for mobile measurement.



Backpack



UAV



Vehicle



USV



# Product Advantages

## Product Portable

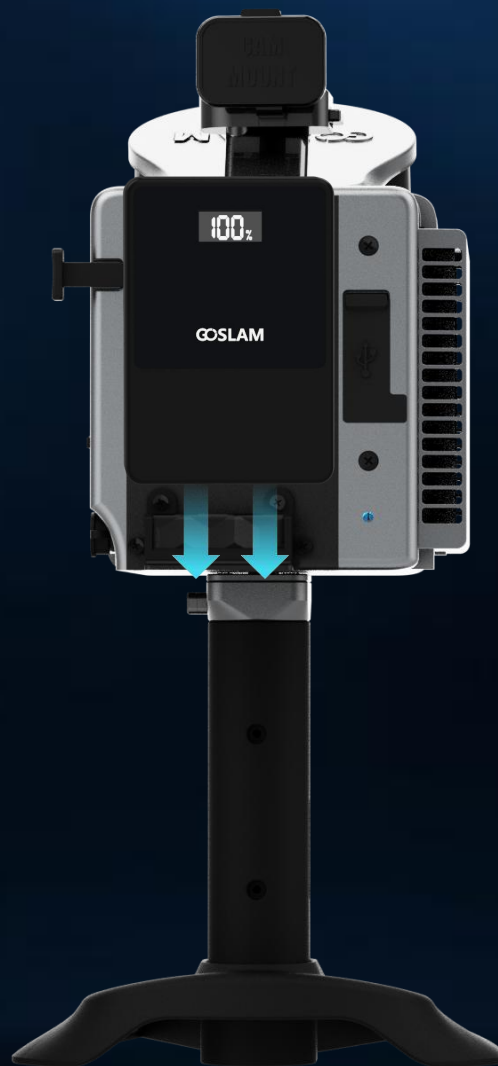
T100 adopts an all-in-one portable design, helping you easily complete every measurement and feeling convenient portable operation.



# Product Advantages

## Portable, Quick-installed Battery

GoSLAM adopts a portable fast charging battery which can display the remaining power in real time and support quick installation of plug-in and plug-out.



Product battery end

## Portable

# Product Advantages

## Touchable Color Screen

A brand new touchable color screen that supports device status information display and user guidance, making it easier to use and smoother to operate.





# Product Advantages

## Visual SLAM

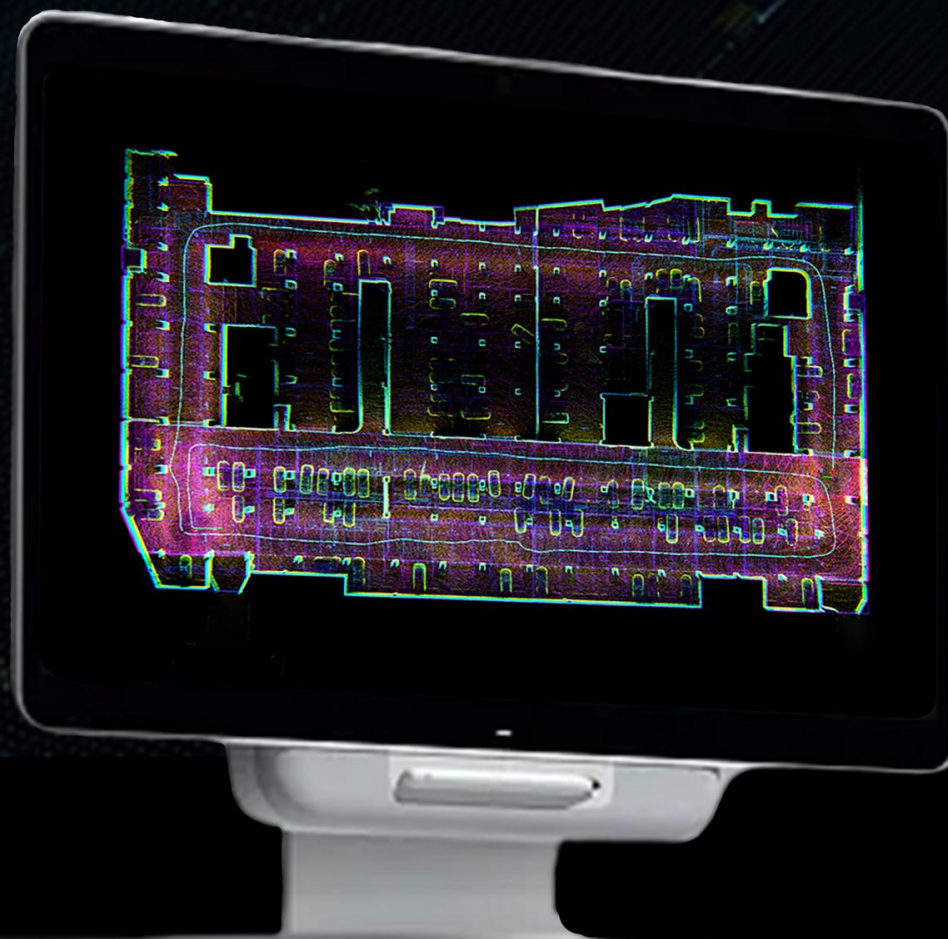
With built-in high-resolution visual SLAM component, synchronously recording visual images, and performing high-precision visual SLAM mapping technology.



# Product Advantages

## The Third-Generation Mapping Technology

T100 adopts a third-generation mapping system that integrates multi-sources data such as laser, visual sensor and GNSS. You can choose processing data in the data-logger or on PC desktop software.



The third-generation mapping technology

# Performance Improved Again



# Product Advantages

## Anchor Point Solution

The unique anchor point solution function can ensure the accuracy and stability of scanning data for indoor and outdoor scenarios with large ranges, low features, and high difficulty.



Large Scenarios Without GNSS

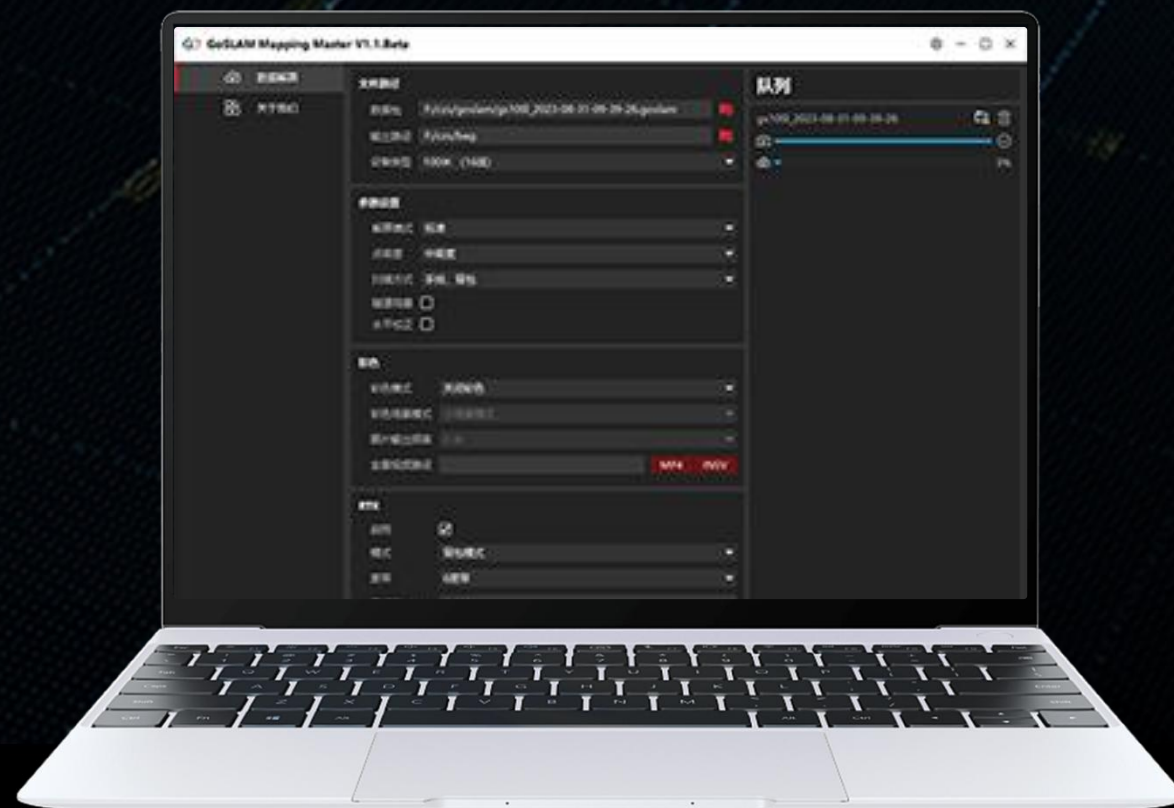
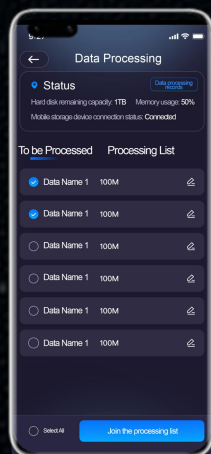
**High Precision  
And Wide Range**



# Product Advantages

## Dual Platforms Solution

GoSLAM series equipment can support dual platforms processing methods either inside the data-logger or on PC desktop. Users can choose their own processing method to improve overall work efficiency and meet needs of various customers.



# Product Advantages

## Multi-Platforms System

Supports multiple scanning modes, such as handheld, backpack, vehicle and drones to meet various demands.



Handheld



Backpack



Car mount



UAV





Pile size  
application

Smart City



Underground  
facilities



Forestry  
applications



Surveying and  
mapping





# Industry Applications

## Industry

**Pile size metering (pan coal, ore, sand, grain storage, etc.)**

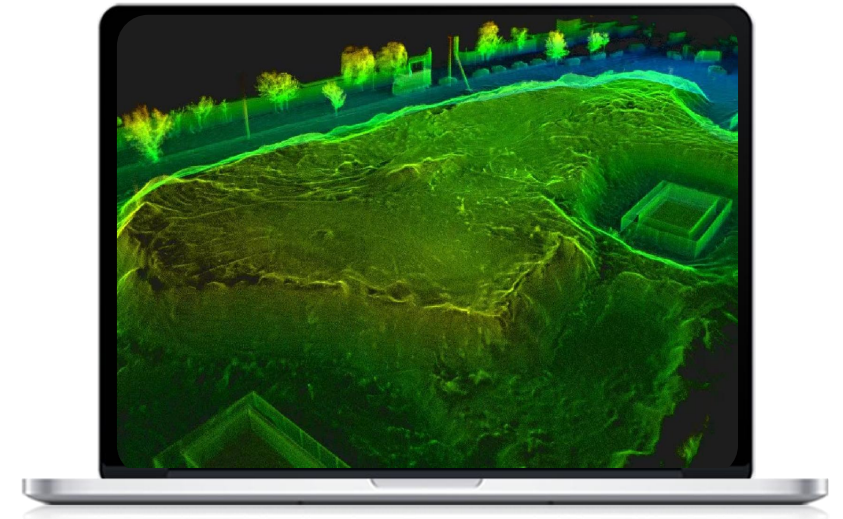
## Advantages

- T100 is based on laser scanning and SLAM positioning technology to perform fast mobile scanning operations in indoor and outdoor environment;
- Even without GPS, its high accuracy point clouds can be acquired quickly and displayed in real time. Its unique ultra-low reflectivity extended range function is particularly effective for coal piles, ore materials etc which make it has unparalleled advantages over other measurement solution.



## Solution

Mobile solution for fast and accurate volume measurement.



# Industry Applications

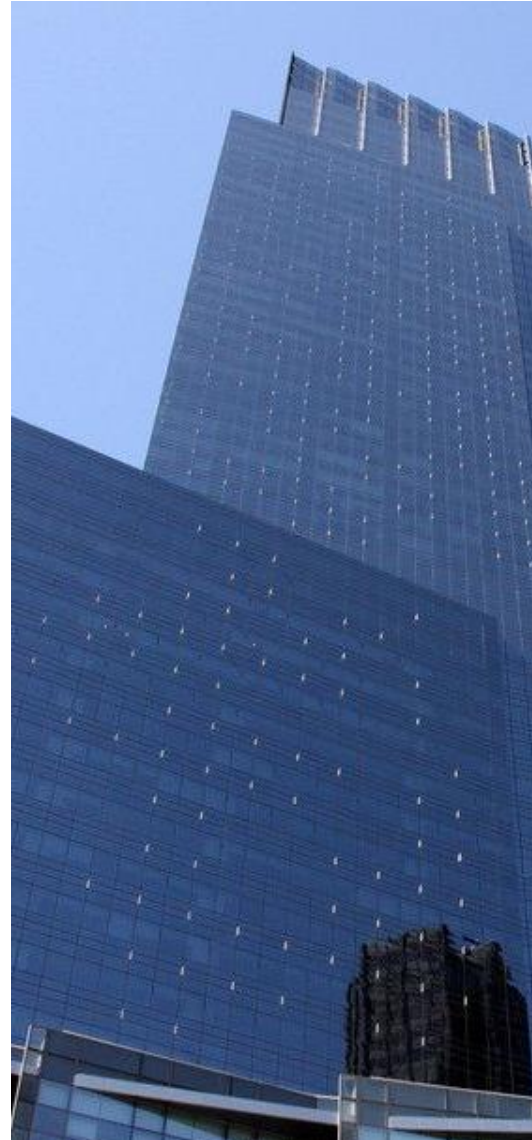
## Industry

**Smart City (BIM,Digital twins、building facade)**

### Advantages

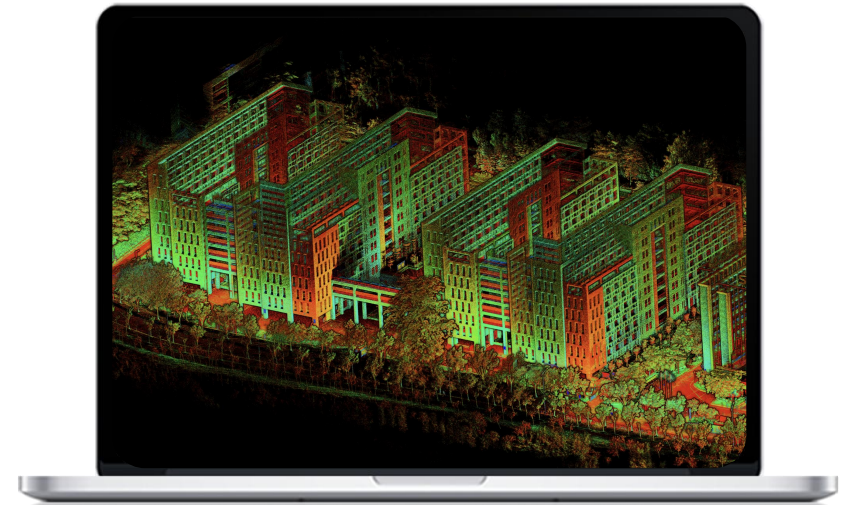
- T100 is being developed on multi-platforms,it can be used by handheld, backpack,vehicle and UAV with a unique rotating sensor with scanning speed up to 320000 points/second.It can acquire data in higher speed.

- It can collect high-density spatial information on various types of buildings, such as modern buildings,urban houses, rural cadastre,ancient buildings etc and conduct 3D modeling and drawing for interior work.



### Solutions

Backpack RTK,vehicle and handheld modes can quickly obtain indoor and outdoor information of buildings



# Industry Applications

## Industry

**Digitization of underground facilities (parking, mine, underground roadway, people air defense facilities)**

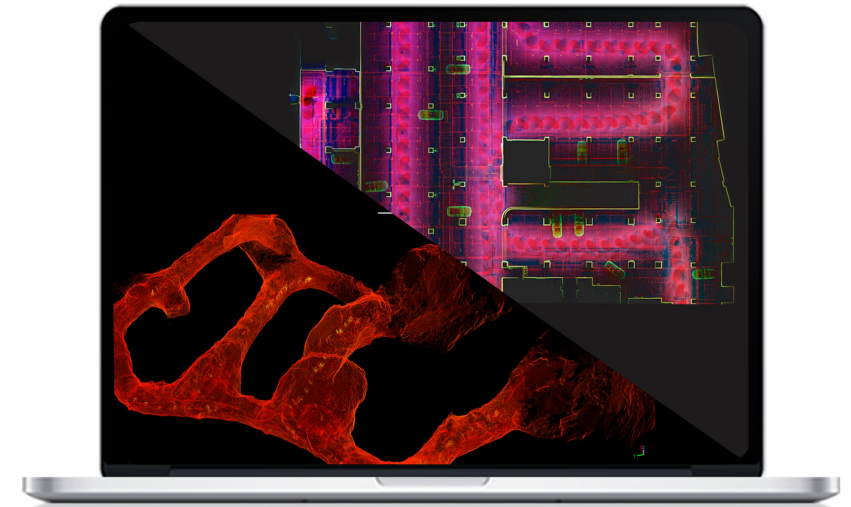
### Advantages

- T100 product is based on SLAM positioning technology which does not require GPS, enabling fast 3D data acquisition both indoors and outdoors, and obtaining high-quality point cloud data without effect of bright or dark environments;
- The T100 system can be used to collect complete and accurate spatial information for underground garage, people air defense facilities, shopping malls, airports, large factory facilities and mining tunnels.



### Solutions

Seamless and integrated information collection method for above the ground and underground





# Industry Applications

## Industry

**Agriculture, forestry, geology**  
**(forestry, plant growth, geological sampling information)**

### Advantage

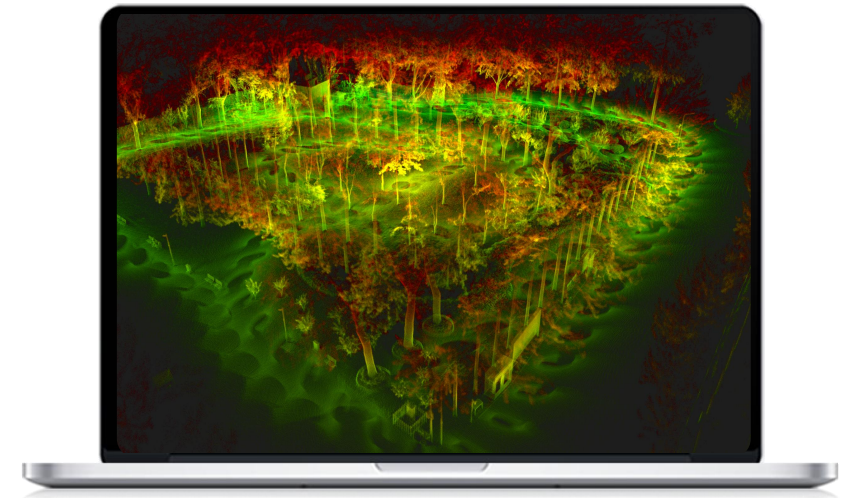
·The complex field environment and high coverage of agriculture, forestry and geology have always been a difficult area for 3D data acquisition. The SLAM technology is able to help solve the difficulties in this field;

·GoSLAM T100 has a rotating laser sensor with  $360 \times 285$  degree scanning coverage. It is possible to greatly collect 3D information on the horizontal and vertical surfaces of the tree crown, making it no longer difficult to conduct agricultural growth, forestry volume evaluation and geological surveys.



### Solutions

SLAM is more effective for complex structural spatial environments



# Industry Applications

## Industry

**Surveying and mapping**  
(Cadastral survey,  
topography, line drawing)

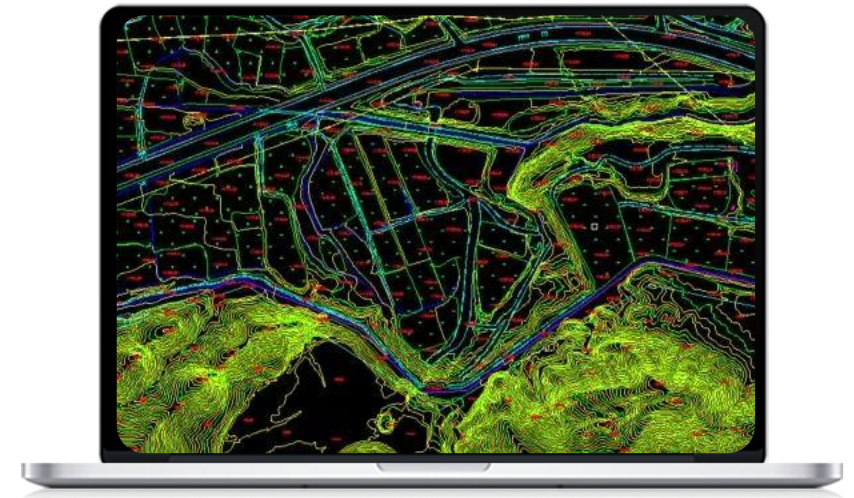
### Advantage

- The flexible and versatile GoSLAM T100 system can be used with handheld,RTK backpacks and UAV.No matter it's sheltered by trees or narrow village lanes, T100 can make it easy;
- The supporting post processing software can be used with various traditional surveying and mapping equipment to provide comprehensive and powerful data assurance for mapping.



## Solutions

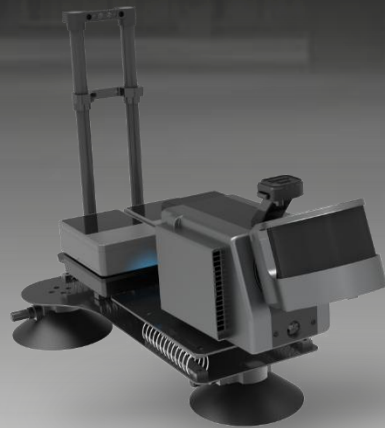
Used in conjunction with the RTK system suite for more efficient field collection



# T-series Accessories



Backpack Kit



Car Mount Kit



Drone Kit



Color Module



# T-series Accessories



GCM V3 Module



Bi-battery Board



Extension Rod

# Accessories

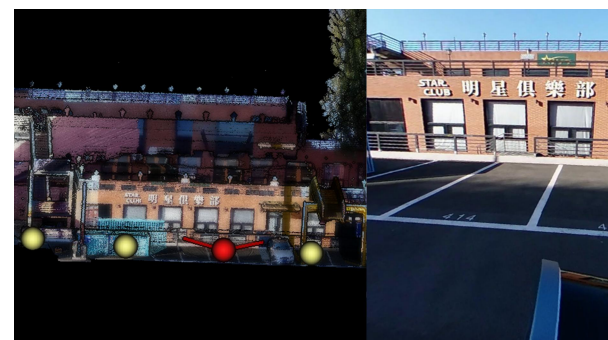


## Color module

- Color module lens direction, dual support for front, rear, left, and right directions;
- It can be used by plugging in, without the need for tedious operations and can be integrated for synchronous collection;
- Support for 1/2-inch with 8K images ;
- The data can be fully automatically for colorizing point cloud and achieved interaction between panoramic image and point cloud.



**Color point cloud data**



**Interaction between color point cloud data and panoramic images**

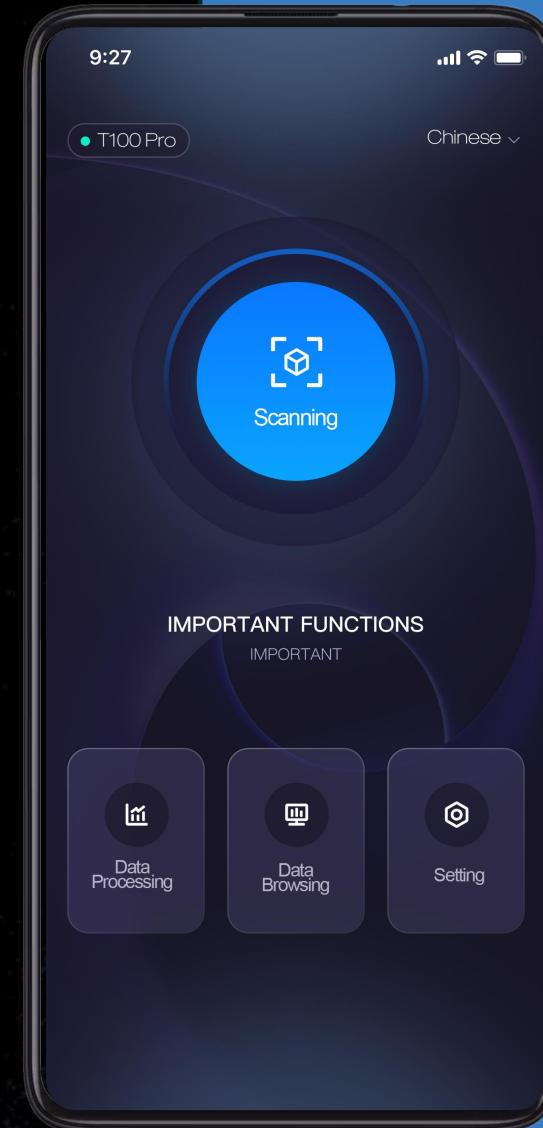


# Software Function

## GoSLAM Mobile APP

The GoSLAM mobile app supports viewing device status, controlling scanners for data collection, previewing scanned point cloud data in real-time and processing data locally. It breaks physical limitations and can easily enable multiple scanning methods.

- By browsing scanning point cloud data in real-time, users can more intuitively grasp the progress and effectiveness of data collection during scanning;
- The APP supports multiple browses and interaction methods as well as more human-computer interaction functions, providing users with a more convenient and intelligent operating experience.



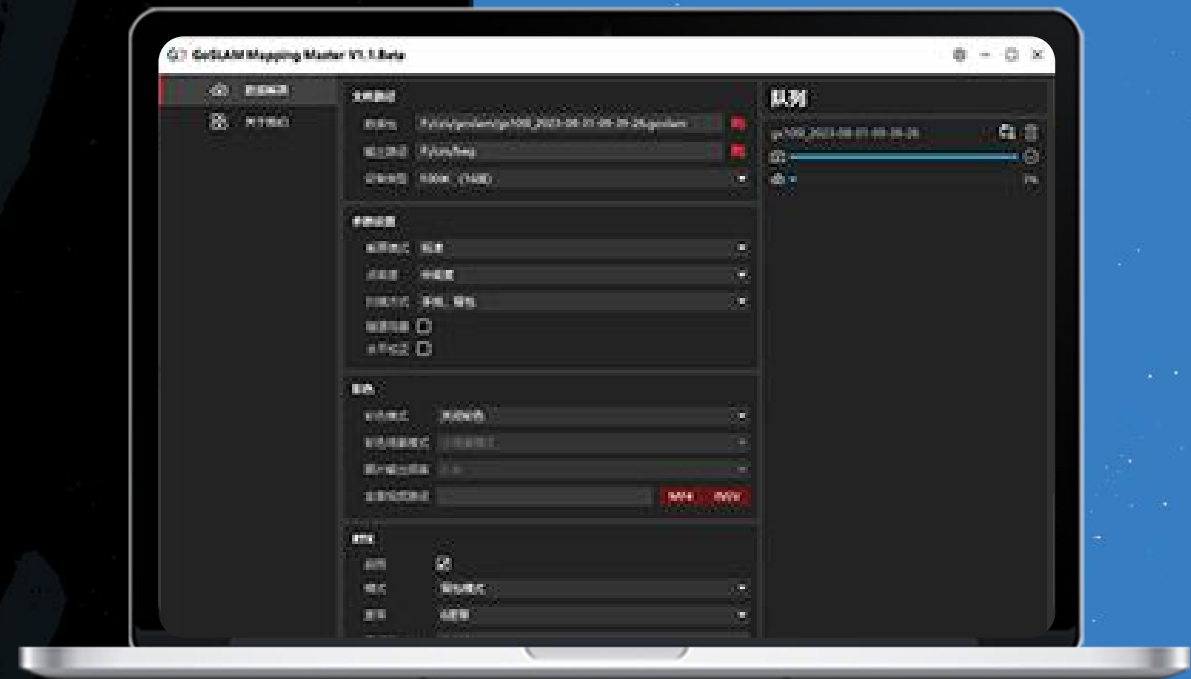


# Software Function

## GoSLAM Mapping Master

PC processing software. Users can choose their own solution methods either in data-logger or on PC desktop software based on actual projects, improving overall work efficiency and meeting various needs.

- The PC processing software supports batch processing of multiple datas and supports multiple scanning scene solution modes;
- Support synthesis of panoramic video without third-party software, point cloud colorizing and panoramic video can be completed in one stop;
- Supports various RTK connection modes such as car mount, backpack and handheld, supports geographic coordinate output, anchor point processing and obtains high-precision scanning result data;
- Dual processing methods in PC software or data-logger, providing users with more options.

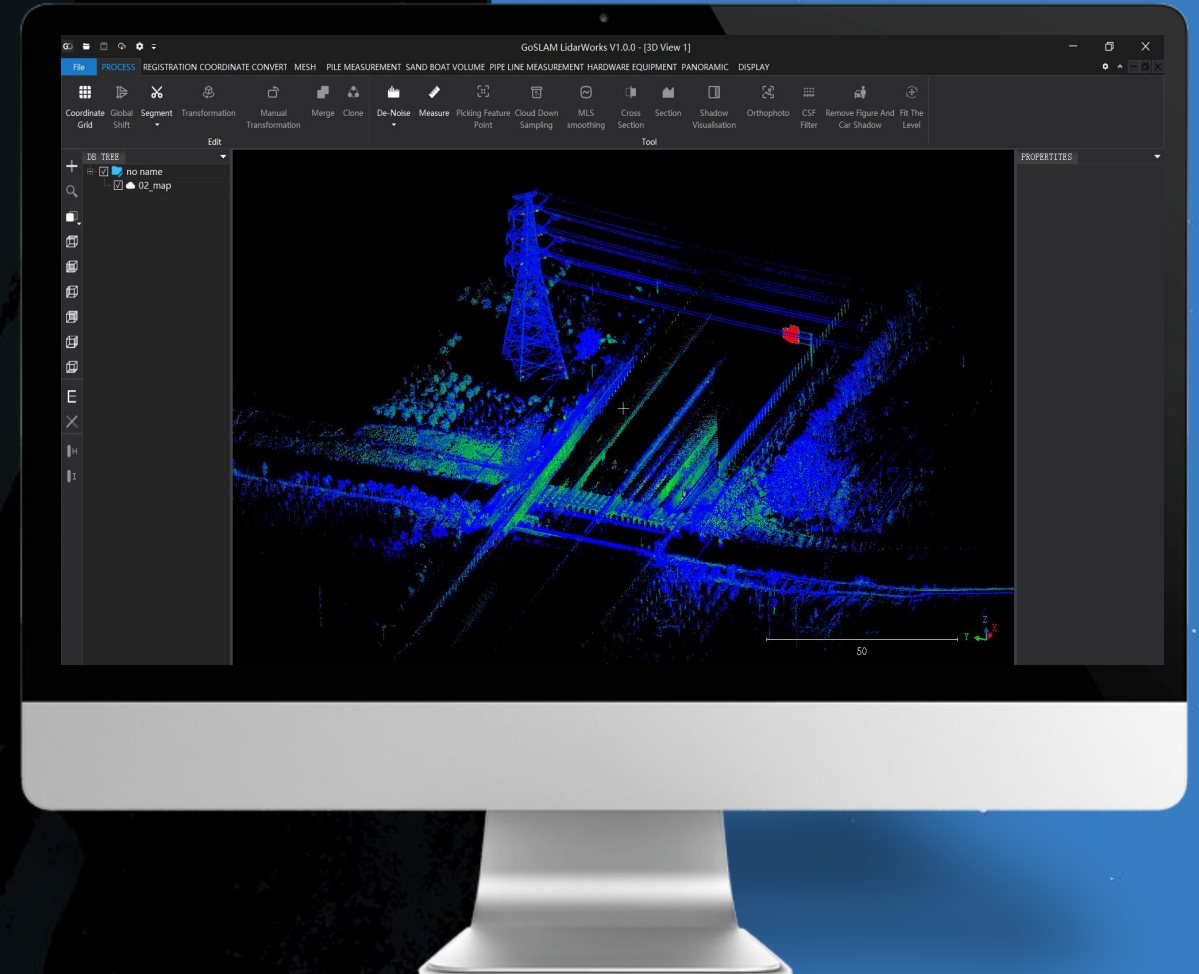


# Software Function

## GoSLAM LidarWorks

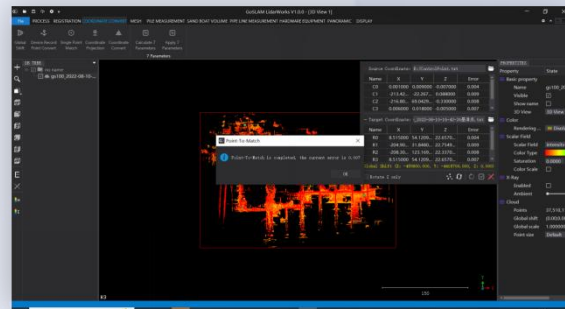
GoSLAM LidarWorks is a powerful point cloud post-processing software that supports GoSLAM's full range of mobile 3D laser scanning systems.

- Working with the scanner function, it can support downloading and archiving point cloud data through network as well as matching anchor control points;
- Support universal point cloud editing and browsing functions which can perform measurement, noise reduction, cropping, merging, coordinate conversion, rotation and offset work on point clouds as well as conventional processing functions such as format conversion and docking with third-party applications;
- At the same time, it also has functions such as automatically point cloud stitching, Mesh model encapsulation, model optimization processing, point cloud volume measurement, point cloud classification, one click removal of moving objects, seven parameter conversion, contour lines and orthophoto images. It can provide industry customized developing functions.

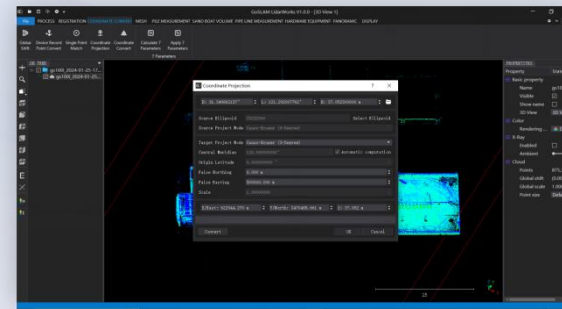


# Software Function

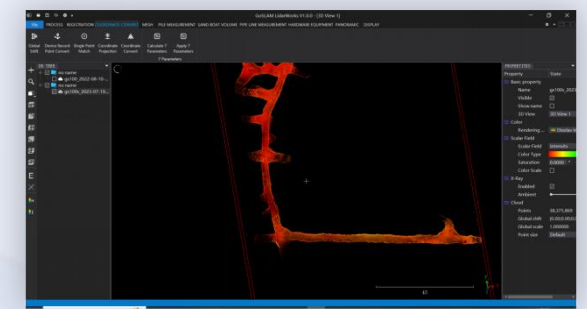
## Software advantages



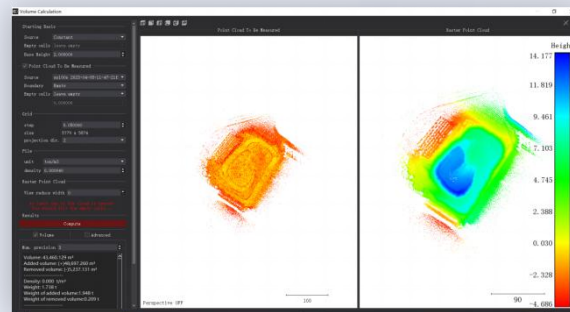
Control point conversion



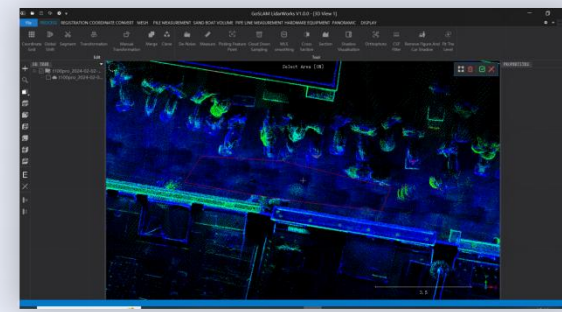
Multi coordinate system conversion



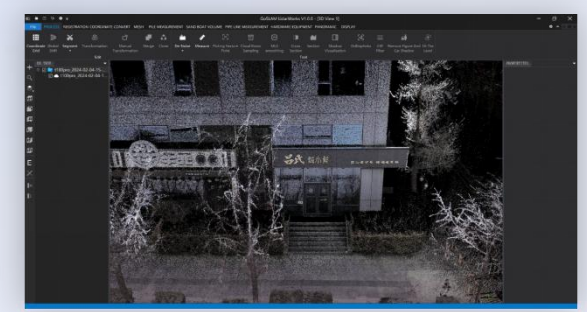
X-Ray Display Mode



Measurement of Pile Volume



Shadow and car shadow removed



Color Point Cloud

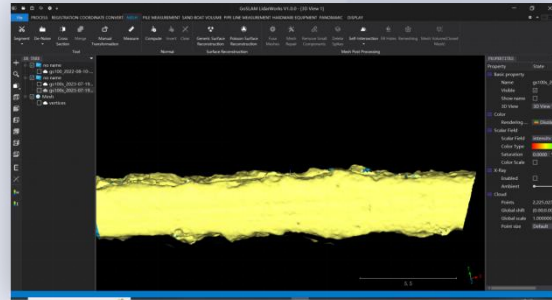
Partial function display



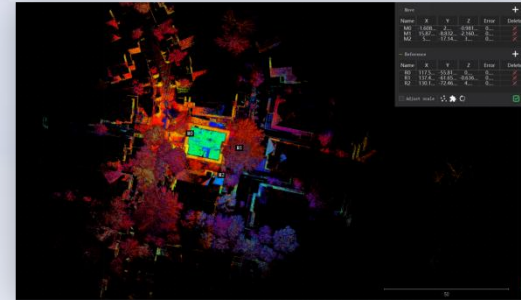


# Software Function

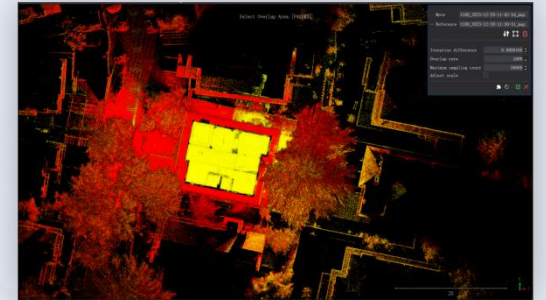
## Advantage



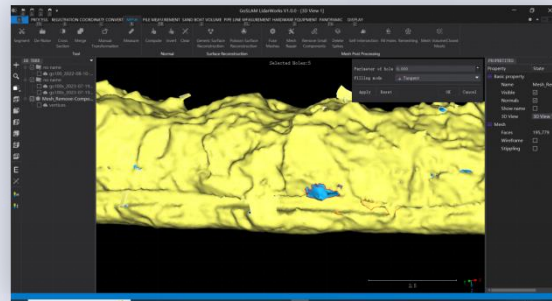
Mesh Model Encapsulation



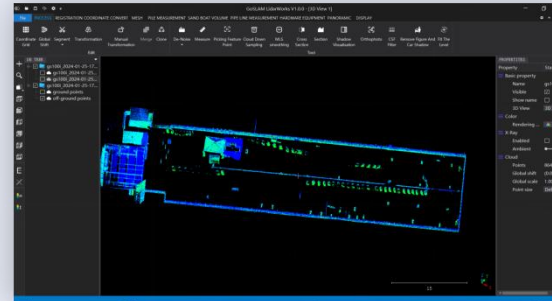
Fast Split Joint



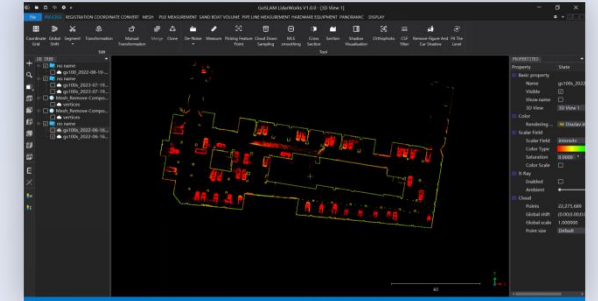
All Loading



Fill Holes



Point Classification



Generate Sectional Drawing

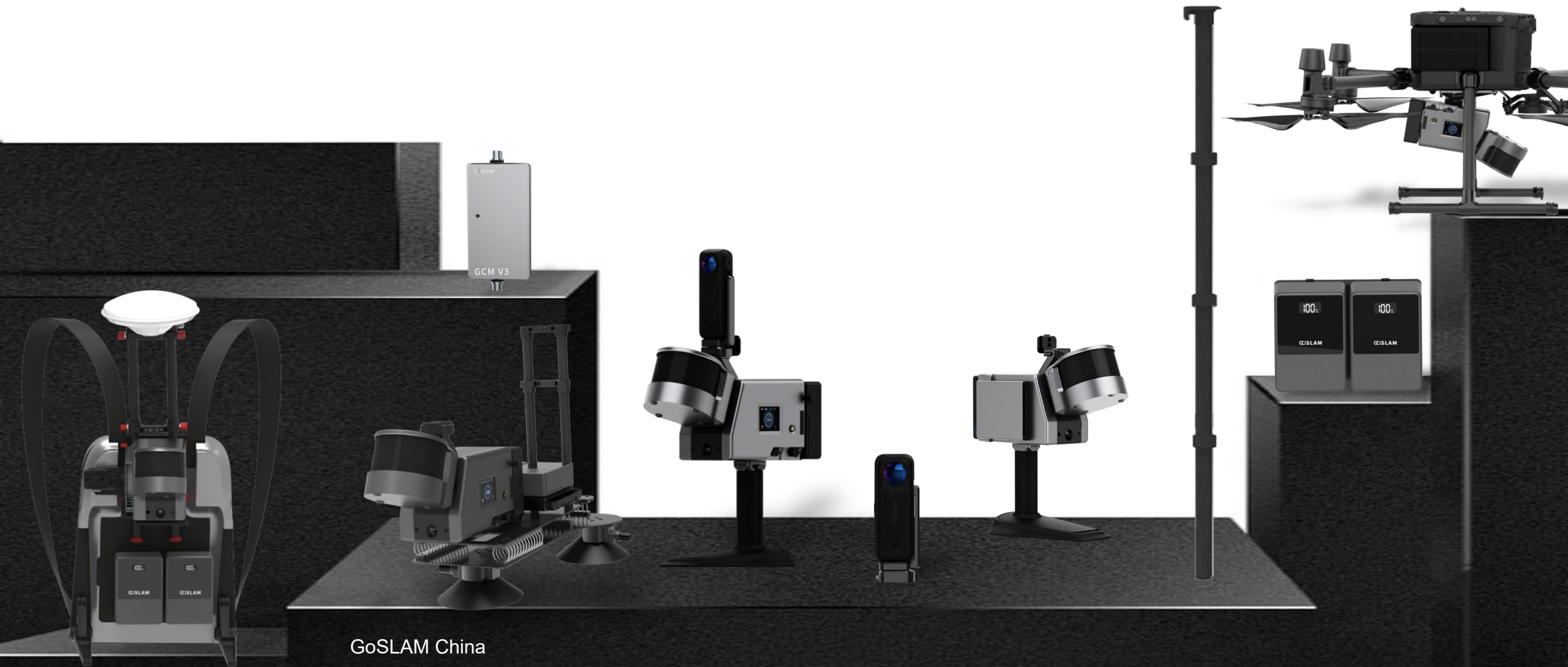
Partial function  
display



# Product Parameter



Protection class	Class I	Laser lines	16 lines	Visual SLAM	Yes
Scanning Range	120m	Scanning speed	320,000/s	FOV	360°×285°
Solution method	Device end / PC end	Positioning	SLAM Technology	Accuracy	1cm(Highest)
Working time	1.5h(Standard Battery) 2.5h(High capacity battery)	Working Temperature	-35~60℃	Resolution	2mm(Highest)
Weight (host end)	1.7KG	Internal Hard Disk	512GB (Expandable)	External RTK	Support



GoSLAM China

Address: 17 floor, Building 2, Zhubang 2000 Business Center, Chaoyang District, Beijing, China.

Tel: 400-055-0771

Web: [www.goslam.com](http://www.goslam.com)

Copyright© 2024.September/1.12.2